





# Full view of festive fireworks

- Photo taken from CITIC Tower



# Panoramic harbour views



# The New Look



GROUND FLOOR LOBBY



TYPICAL LIFT LOBBY



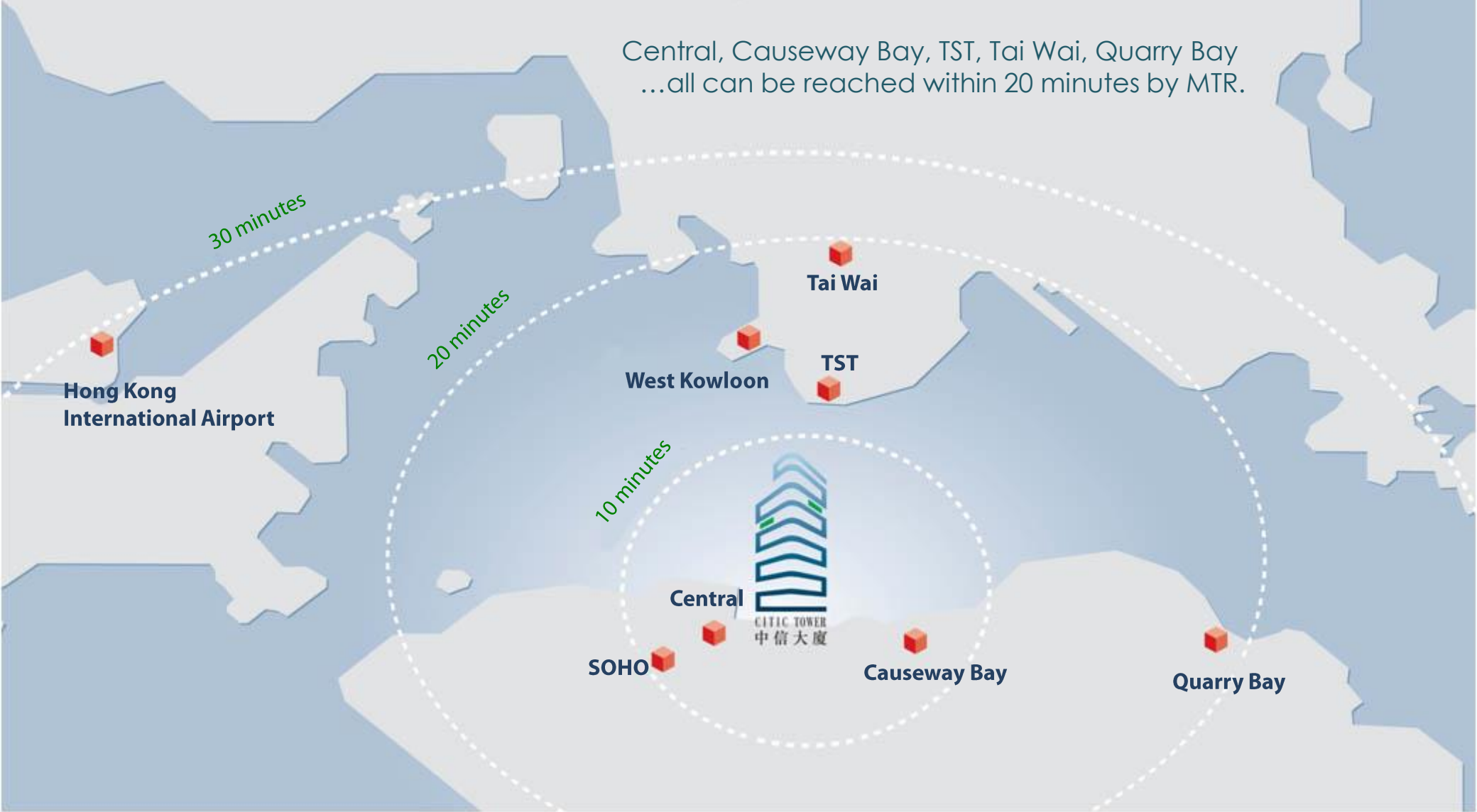
NEWLY DESIGNED CONCIERGE



ROUNDBABOUT

# Not a problem to be at my desk on time

Central, Causeway Bay, TST, Tai Wai, Quarry Bay  
...all can be reached within 20 minutes by MTR.



# Walking distance to CITIC Tower

- Central Government Offices → **2 mins**
- Admiralty MTR Station → **5 mins**
- Promenade Admiralty → **5 mins**
- HK Academy for Performing Arts → **5 mins**
- Pacific Place → **6 mins**
- JW Marriott Hotel → **7 mins**
- High Court → **10 mins**



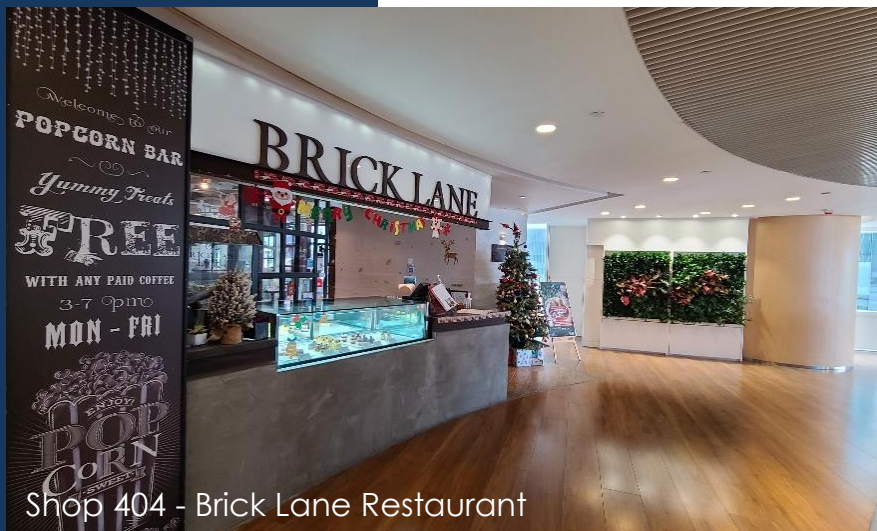


More than 200 parking spaces and EV charging facilities are available in the building.  
\* Shuttle bus are provided to and from Star Ferry Central Pier, General Post Office and HK City Hall.

\* CITIC Tower Property Management Co., Ltd. exclusively reserves the right and may, at any time and without notice, modify or discontinue the shuttle bus services, whether temporarily or permanently.



# Retail Floors

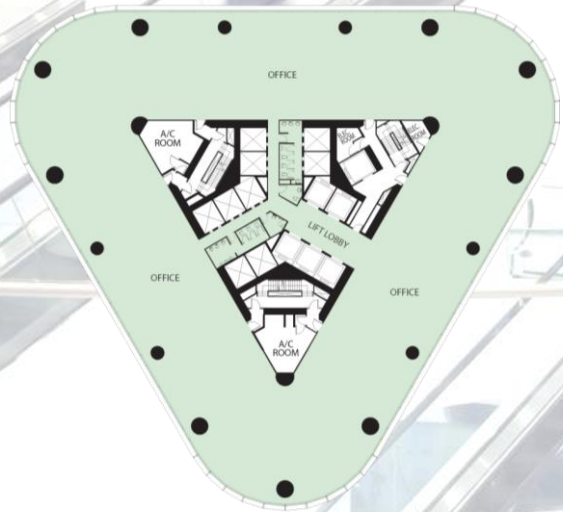


# Typical Floor Plans

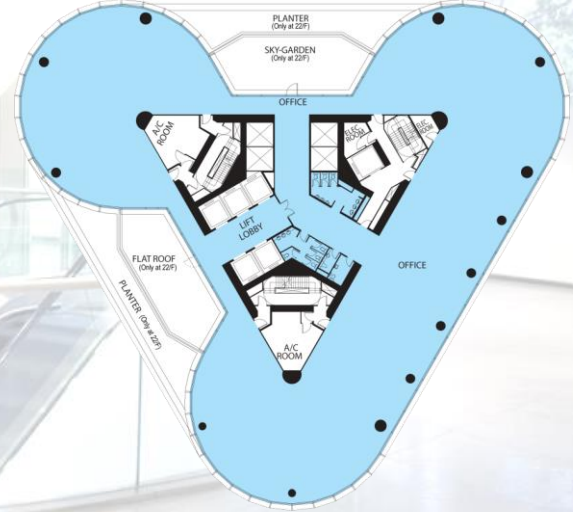
- ROOF
- 33/F
- 32/F
- 31/F
- 25 - 33/F  
HIGH ZONE
- 30/F
- 29/F
- 28/F
- 27/F
- 26/F
- 25/F
- 24/F
- 23/F
- 22/F
- 16 - 24/F  
MID ZONE
- 21/F
- 20/F
- 19/F
- 18/F
- 17/F
- 16/F
- 15/F
- 13/F
- 12/F
- 6 - 15/F  
LOW ZONE
- 11/F
- 10/F
- 9/F
- 8/F
- 7/F
- 6/F
- 5/F
- 2 - 5/F  
RETAIL
- 4/F
- 3/F
- 2/F
- 1/F
- G/F
- LOWER G/F



**Low Zone**  
18,080 sq ft (L)



**Mid Zone**  
14,794 sq ft (L)



For identification only

# Awards

Awarding Agency	Award Title
HKIFM Excellence in Facility Management Awards	Office Building Excellence Award
Environmental Protection Department	Indoor Air Quality Certificate Award
Water Supplies Department	Quality Water Supply Scheme for Buildings Gold Award
Business Environment Council	Low Carbon Charter
Hong Kong Green Organisation Certificate	Wastewi\$e Excellence Level
Environment Bureau	Charter on External Lighting Platinum Award
Hong Kong Council on Smoking and Health	Hong Kong Smoke-Free Leading Company Award

# Technical Specifications

## **Air Conditioning System**

- VAV ceiling duct type system with intelligent direct digital control & 24-hour chilled water supply
- Ultraviolet light air purification system installed at the fresh air intakes and main air supplies of the office floors and Shopping Arcade

## **Curtain Wall**

- Solar reflective double glazed pane of glass

## **Electrical supply System**

- 200A to 250A TPN per floor

## **Floor Loading**

- 3kPa live load & 2kPa partition load

# Technical Specifications

## **Floor to Floor Height**

- Slab to slab: 3.65m
- Raised floor to false ceiling height 2.5m

## **Internal Staircase**

- Provision of structural opening

## **Lighting**

- Illumination level of 500 lux at desktop level by T5 LED fluorescent lamp

## **Passenger Lifts (For Office Zone)**

- 14 lifts, each with a 20-person capacity
- PORT destination control system

## **Service/Fireman Lift**

- 1 service/fireman lift of 2,000kg capacity serving from the cargo handling bay located at LG/F to all floors

## **Raised Floor System**

- 150mm depth

# Technical Specifications

## Security

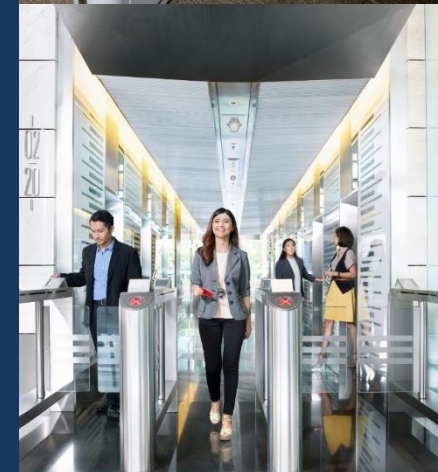
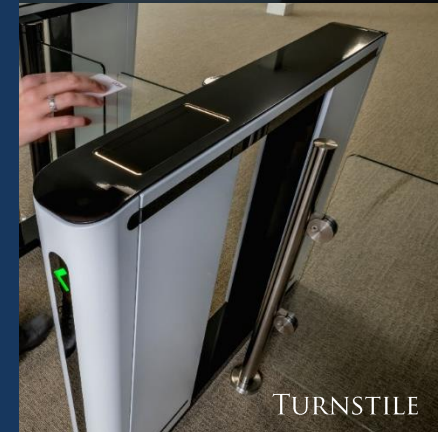
- Turnstiles provide superior access control by both detecting and deterring unauthorized entries
- 24-hour CCTV
- Computerized watchman touring system

## Standby Electricity Provision

- Designated space for multi-floor tenant's back-up generator
- Essential power for tenant's servers

## Telecommunications

- 5G mobile coverage
- Fiber optics system
- Computer earth system on each floor
- Dedicated riser space for multi-floor tenant
- Wi-Fi connectivity at designated area
- Wireless aerial coverage for mobile phones



# Leasing Enquiry

## **CITIC Pacific Property Agents Ltd**

中信泰富物業代理有限公司

9/F, CITIC Tower, 1 Tim Mei Avenue

Central, Hong Kong

Tel: 2168 2168 Fax: 2537 9928

[www.cp-properties.com.hk](http://www.cp-properties.com.hk)

Ms. Vivien Chan

Tel: 2168 2603

Email: [vivienchan@citicpacific.com](mailto:vivienchan@citicpacific.com)

Ms. Tracy Leung

Tel: 2168 2606

Email: [tleung@citicpacific.com](mailto:tleung@citicpacific.com)

Ms. Connie Hui

Tel: 2168 2023

Email: [conniehui@citicpacific.com](mailto:conniehui@citicpacific.com)

All information, particulars and illustrations contained herein are for reference only and shall not constitute or be construed as giving any offer, representation or warranty whether expressly or impliedly. Whilst every reasonable care has been taken in preparation of this document, the Owner, its representatives or agents shall not be held responsible for any inaccuracies and omissions. Interested persons are advised to make their own enquiries and satisfy themselves by taking their own legal advice in all respects.